



Improving the Health, Safety, and Well-being of LGBT Populations

Building Collections and Connections for LGBT Health Information

Tony Nguyen, MLIS, AHIP
Access & Communications Coordinator
National Network of Libraries of Medicine (NN/LM)
Southeastern/Atlantic Region (SE/A)



This project has been funded in whole or in part with Federal funds from the National Library of Medicine (NLM), National Institutes of Health (NIH), under cooperative agreement No. UG4LM012340 with the University of Maryland, Baltimore. The content is solely the responsibility of the authors and does not necessarily represent the official views of the National Institutes of Health.



NATIONAL NETWORK OF
Libraries of Medicine

Southeastern/Atlantic Region

Google™ Custom Search

- Home
- Funding »
- Member Services »
- Outreach »
- Resource Sharing and Document Delivery »
- Training and Education »

News & Announcements

- » Beyond the SEA
- » [SEA Currents](#) (News from the Region and Beyond)
- » [Upcoming Classes](#)

Follow us:



This Week @ SEA

August 15-19 - Dale is attending meetings in Philadelphia, PA

Out of the Office

August 15 - Nancy
August 17 - Nancy
August 18 - Nancy(AM) and Ashley

Quick Links

- » [Funding Opportunities](#)
- » [DOCLINE](#)
- » [Order Articles with Loansome Doc](#)
- » [Search for Network Members](#)
- » [Order Educational Materials](#)
- » [Emergency Preparedness & Reponse Toolkit](#)
- » [Libraries and the Affordable Care Act](#)

Resources for Members of the National Network of Libraries of Medicine (NN/LM) Southeastern/Atlantic Region (SE/A)



Supporting collaboration among 32 Resource Libraries and over 1,000 information centers.

Please click on the state name to find specific information resources in the states of:

- [Alabama](#)
- [District of Columbia](#)
- [Florida](#)
- [Georgia](#)
- [Maryland](#)
- [Mississippi](#)
- [North Carolina](#)
- [Puerto Rico](#)
- [South Carolina](#)
- [Tennessee](#)
- [U.S. Virgin Islands](#)
- [Virginia](#)
- [West Virginia](#)

JOIN THE NETWORK

Learn about the benefits of free [Network Membership](#)



<https://nnlm.gov/sea>



Objectives

Participants will be able to:

- Identify barriers to quality healthcare for the LGBT population.
- Identify resources for health disparities in the LGBT population.
- Discuss how a librarian can address and educate the community on LGBT health disparities.

Diversity Wheel





What are Health Disparities?

“a particular type of health difference that is closely linked with social, economic, and/or environmental disadvantage. Health disparities adversely affect groups of people who have systematically experienced greater obstacles to health based on their racial or ethnic group; religion; socioeconomic status; gender; age; mental health; cognitive, sensory, or physical disability; sexual orientation or gender identity; geographic location; or other characteristics historically linked to discrimination or exclusion.”



Healthy People 2020. Disparities. Available at: <https://www.healthypeople.gov/2020/about/foundation-health-measures/Disparities>. Accessed May 26, 2016.



What is Culturally Competent Healthcare?

Cultural competence in health care describes the ability of systems to provide care to patients with diverse values, beliefs and behaviors, including tailoring delivery to meet patients' social, cultural, and linguistic needs.



Why Cultural Competency?

Quite simply, healthcare services that are respectful of and responsive to the health beliefs, practices, cultural and linguistic needs of diverse patients can help bring about positive health outcomes.



Cultural Competencies



Purnell LD & Paulanka BJ. Transcultural Health Care, A Culturally Competent Approach, 2nd ed. Philadelphia, PA: FA Davis Co; 1998

Continuum of Cultural Competence

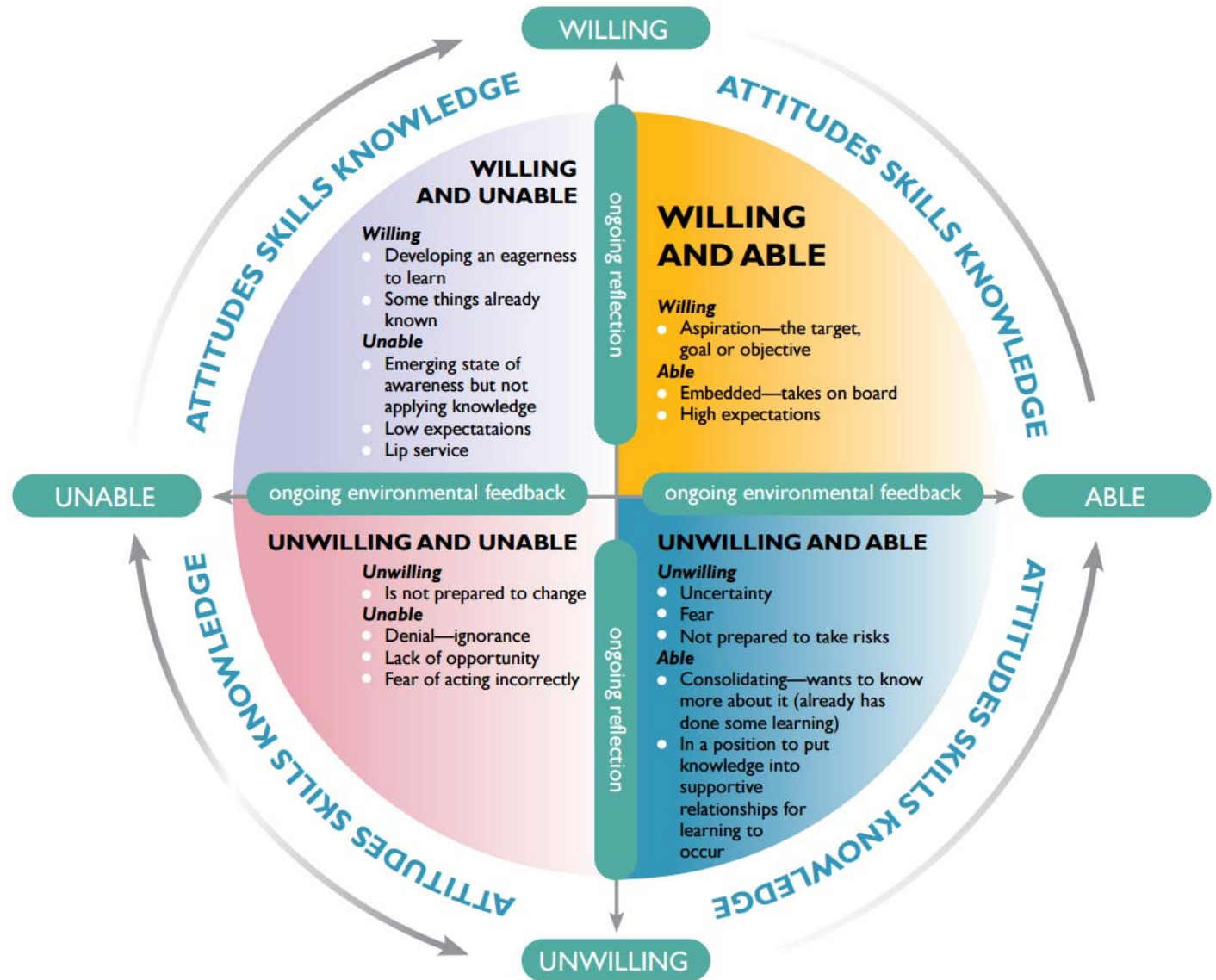




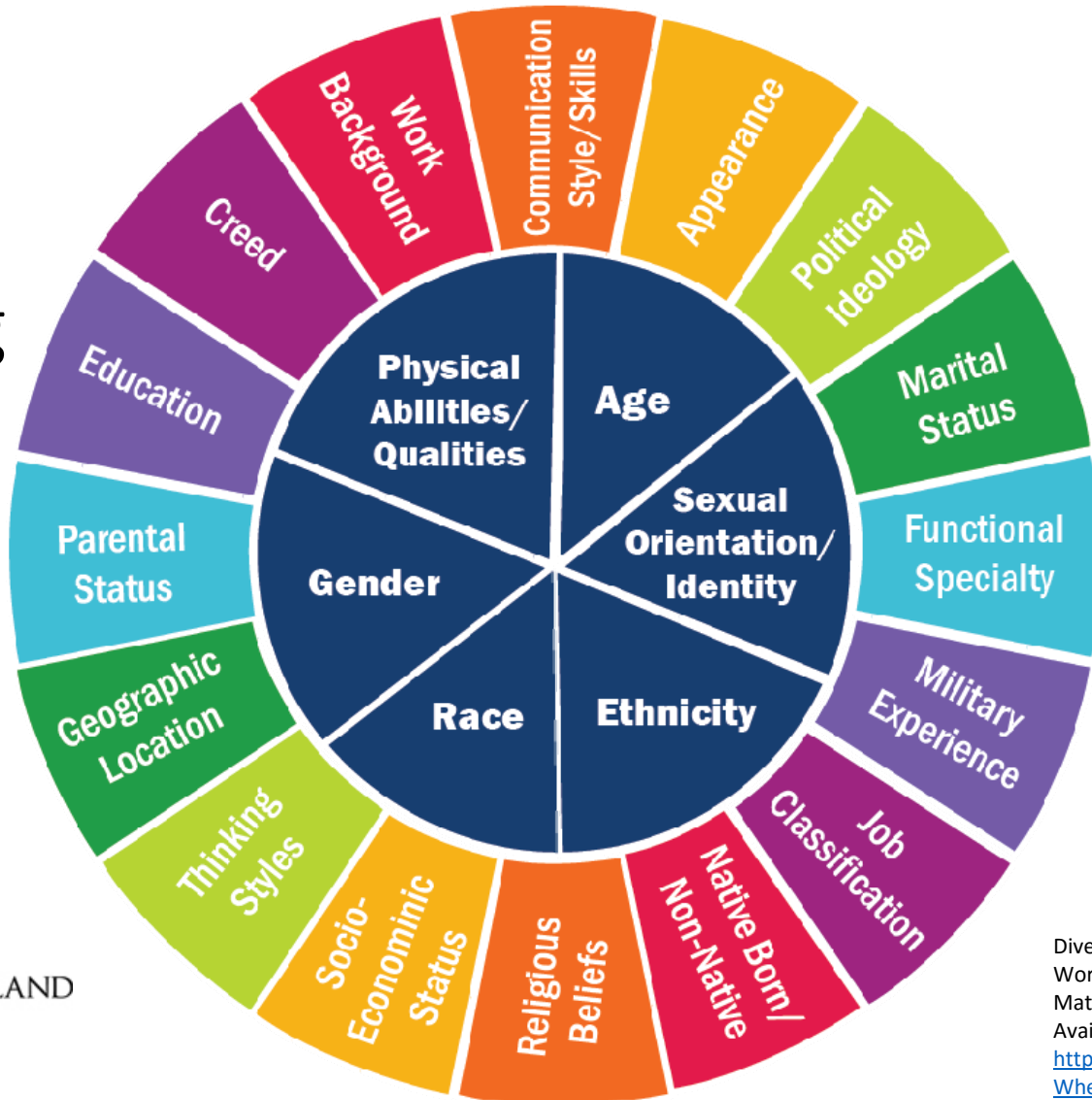
Southeastern/Atlantic Region

Willing and Able?

Australian Government
Department of Education,
Employment and Workplace.
Educators Belonging, Being, &
Becoming. Educators' Guide to
the early Years Learning
Framework for Australia. 2010. p.
26. Available at:
https://docs.education.gov.au/system/files/doc/other/educators_guide_to_the_early_years_learning_framework_for_australia.pdf.



Addressing Diversity Isn't Easy



Diversity and Multicultural Affairs Division of Workforce Strategy, Equity, & Engagement – Diversity Matters at UNC. THINKposium 2013: Art of Hosting. Available at: <http://diversity.unc.edu/files/2013/06/Diversity-Wheel.png>. Accessed May 26, 2016.

Learning About Culture

Global Society

- Community
 - Family
 - Person

- Person

- Spirituality
- Death rituals
- Pregnancy
- Nutrition
- High-risk behaviors
- Bio-cultural ecology
- Workforce issues
- Family roles and organization
- Communication
- Overview/heritage
- Healthcare practitioners
- Healthcare practices



Major Assumptions

- All health care professions need similar information about cultural diversity.
- One culture is not better than another; they are just different.
- Differences exist among, between & within cultures.
- Cultures change slowly over time in a stable society.



Major Assumptions Continued

- If clients are co-participants in care and have a choice in health-related goals, plans and interventions, health outcomes will be improved.
- Culture has powerful influence on one's interpretation of a response to health care.
- Individuals and families belong to several cultural groups.
- Caregivers who can assess, plan, and intervene in a culturally competent manner will improve the care of their clients.



Why LGBT Health & Cultural Competency?

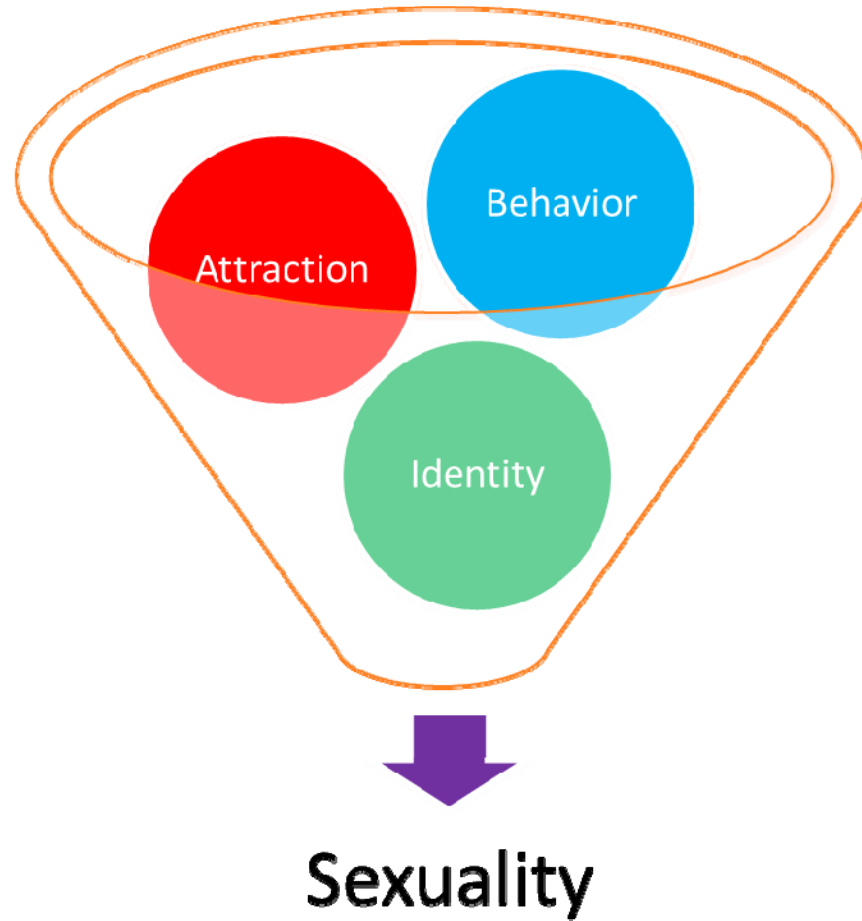
- Improve the health, safety, and well-being of gay, lesbian, bisexual, and transgender (LGBT) individuals.
- Reduce disease transmission and progression
- Increase mental and physical well-being
- Reduce healthcare costs
- Increase longevity



Terminology

- Gender Identity
- Sexual orientation
- Transgender
- Questioning
- Cisgender
- Gender Variant
- Gay
- Lesbian
- Bisexual
- Queer
- Intersex
- Ally
- Outing
- Coming Out
- Transgender
- M2F/F2M
- WPW/MSM
- Ze/Zir/Zirs (Xe/Xem/Xyr)

LGBT & Cultural Competency



Outlining These Traits

SEX		
Genetic	XY	←————— XXY (Klinefelter), XYY, XO (Turner) —————→ XX
Anatomic	Male	←————— CAH, Androgen Insensitivity —————→ Female
GENDER		
Identity	Man	←————— Transgender, Genderqueer —————→ Woman
Role	Masculine	←————— Neutral —————→ Feminine
Expression	Masculine	←————— Androgynous —————→ Feminine
SEXUALITY		
Attraction	Homosexual	←————— Bisexual —————→ Heterosexual
Identity	Gay, Lesbian, Straight, Queer, Butch, Fag, Bi, Femme, Dyke	
Behavior	Same Sex	←————— Both, None —————→ Other Sex



Figure 2
Social Determinants of Health

Economic Stability	Neighborhood and Physical Environment	Education	Food	Community and Social Context	Health Care System
Employment	Housing	Literacy	Hunger	Social integration	Health coverage
Income	Transportation	Language	Access to healthy options	Support systems	Provider availability
Expenses	Safety	Early childhood education		Community engagement	Provider linguistic and cultural competency
Debt	Parks	Vocational training		Discrimination	Quality of care
Medical bills	Playgrounds	Higher education			
Support	Walkability				

Heiman HJ & Artiga S. Beyond Health Care: The Role of Social Determinants in Promoting Health and Health Equity. The Henry J Kaiser Family Foundation. Nov 04, 2015. Available at: <http://kff.org/disparities-policy/issue-brief/beyond-health-care-the-role-of-social-determinants-in-promoting-health-and-health-equity/>

AAMC. Achieving Health Equity: How Academic Medicine is Addressing the Social Determinants of Health. 2016. Available at: <https://www.aamc.org/download/460392/data/sdoharticles.pdf>

Health Outcomes
 Mortality, Morbidity, Life Expectancy, Health Care Expenditures, Health Status, Functional Limitations



Social Determinants of LGBT Populations

- Social stigma
- Rejection by family members
- Abuse and violence
- Unfair treatment in the legal system, state/federal
- Hiding some or all aspects of one's life
- Lacking health insurance
- Shortage of culturally competent health providers

Homophobia

- Personal Homophobia
- Interpersonal Homophobia
- Cultural Homophobia
- Institutional Homophobia

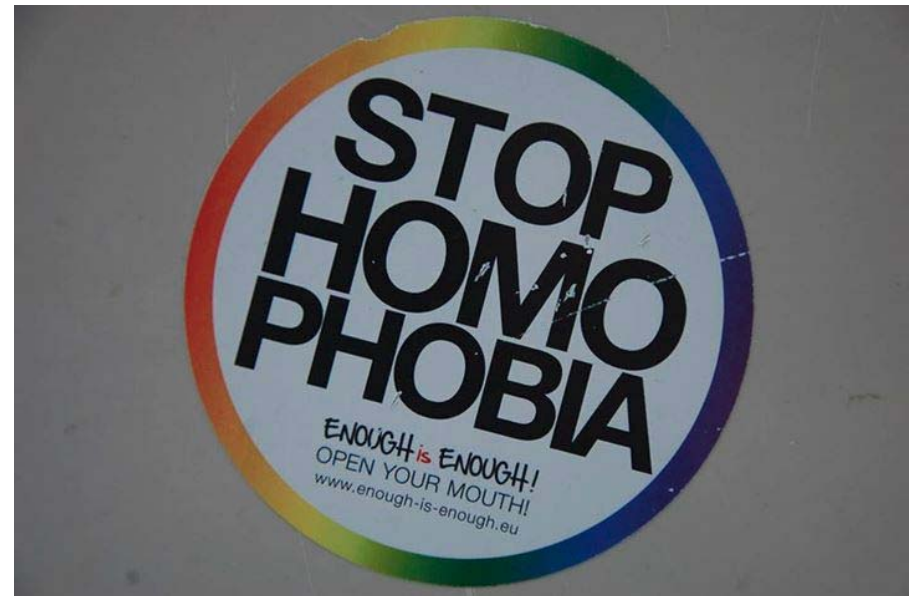
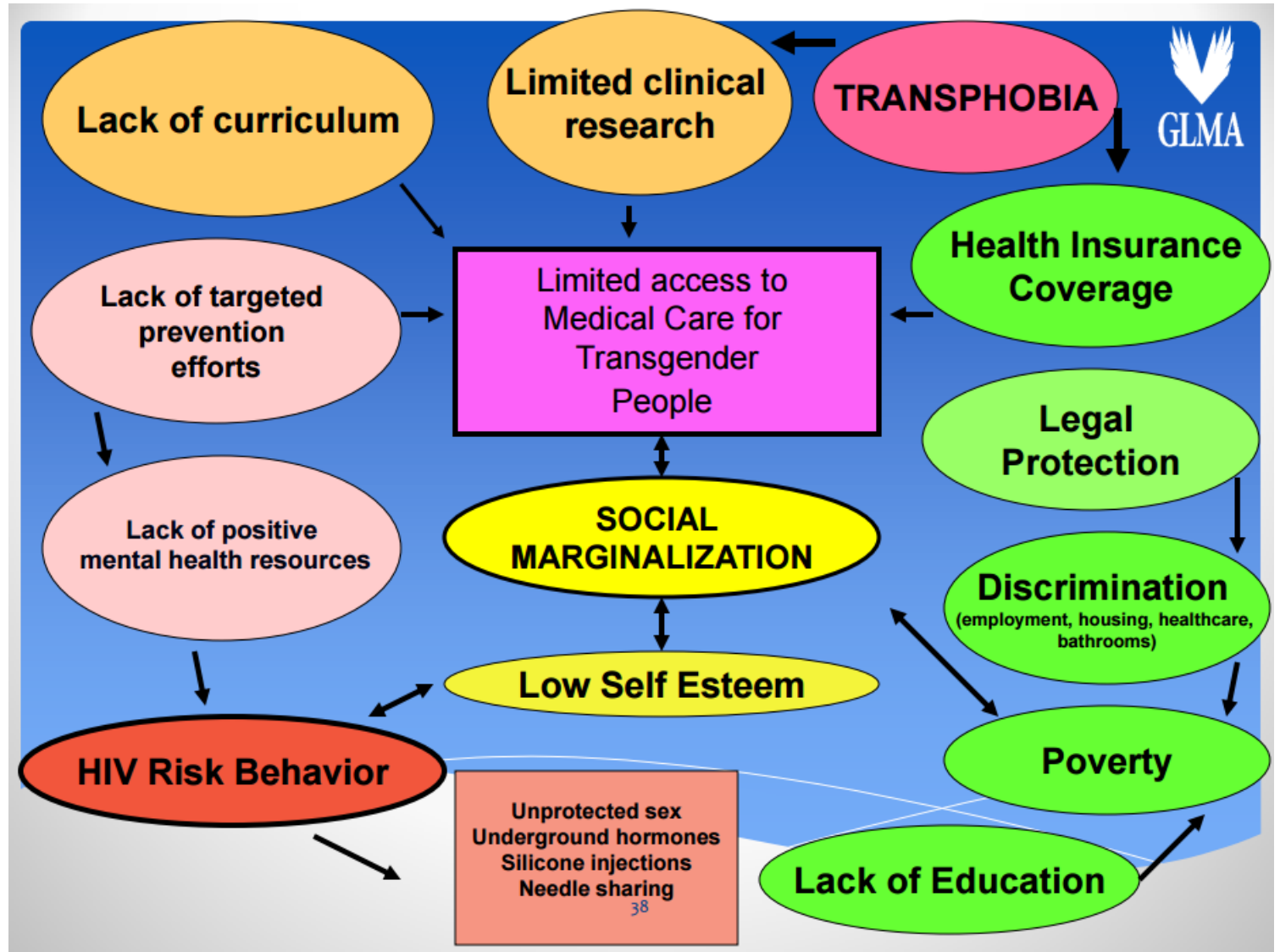


Image from:

[https://www.flickr.com/photos/mapurbanlinguisticlandsc
ape/17291236366](https://www.flickr.com/photos/mapurbanlinguisticlandsc ape/17291236366)

Social Determinants for Transgender People





LGBTIQ Health Issues

Improve the health, safety, and well-being of LGBTIQ individuals.

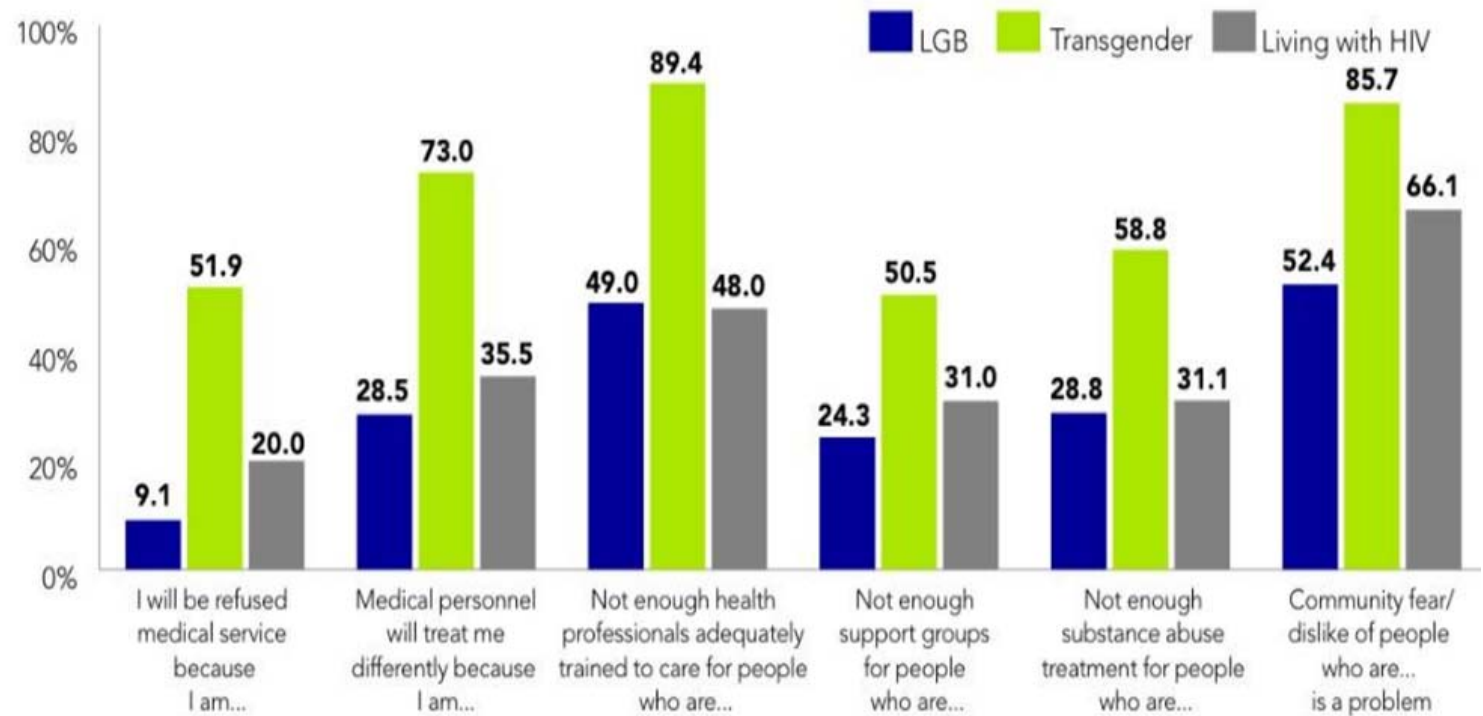
- Smoking, alcohol, and substance abuse
- Mental health illnesses, like anxiety and depression
- Sexual and Reproductive Health
- Eating Disorders, Obesity or Anorexia
- Cardiovascular Health
- Higher rates of sexually transmitted diseases
- Increased cancer risks, decreased screenings
- Limited evidence-based research on hormones



Lesbian, Gay, Bisexual, and Transgender Health. [Healthy People 2020](#).

When Health Care Isn't Caring

Table 6: Fears and concerns about accessing health care

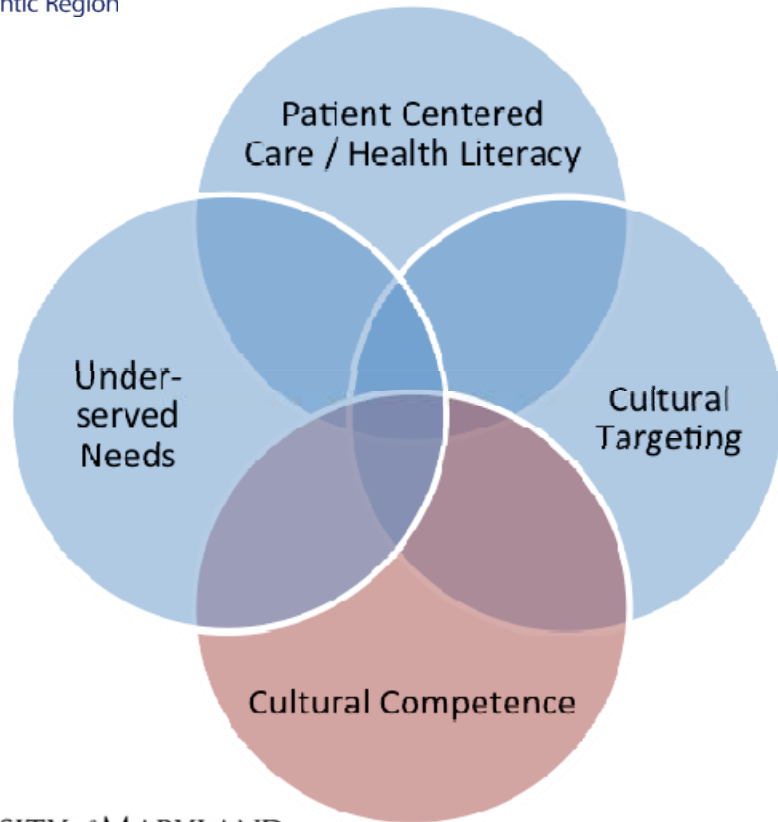




Health Disparities: A Sample

- 24% of bisexuals lack health insurance (vs. 20% heterosexuals)
- MSM represent 2% of US population, yet account for 56% of people with HIV and 66% new HIV infections.
- Estimated 40% of homeless youth are LGBT
- 39% of transgender people have faced harassment or discrimination when seeking routine health care
- 26% bisexual women reported suicidality
- MSM are 17x more likely to develop anal cancer than heterosexual men.

Cultural Competence in Libraries



- Needs Analysis
- Health Literacy
- Training for Library Staff
- Reference Interview Process
- Library Instruction
- Collection Development
- Outreach to Community Groups



Resources

U.S. Government Resources





Reflection

- What is your experience in searching for LGBT health topics?
- What resources did you use?
- Did you find what you were looking for?



Healthy People 2020

The screenshot shows the HealthyPeople.gov website interface. At the top, there is a search bar with the text "Search HealthyPeople.gov" and a "Go" button. Below the search bar is a navigation menu with the following items: "Topics & Objectives", "Leading Health Indicators", "Data Search", "Healthy People in Action", "Tools & Resources", "Webinars & Events", and "About". The main content area features a breadcrumb trail: "Home » 2020 Topics & Objectives » Lesbian, Gay, Bisexual, and Transgender Health". To the right of the breadcrumb trail are "Print" and "Share" icons. The main heading is "Lesbian, Gay, Bisexual, and Transgender Health **New**". Below the heading is a tabbed interface with three tabs: "Overview", "Objectives", and "Interventions & Resources". The "Objectives" tab is currently selected. Under the "Objectives" tab, there is a "Goal" section with the text: "Improve the health, safety, and well-being of lesbian, gay, bisexual, and transgender (LGBT) individuals." Below the goal is an "Overview" section with the text: "LGBT individuals encompass all races and ethnicities, religions, and social classes. Sexual orientation and gender identity questions are not asked on most national or State surveys, making it difficult to estimate the number of LGBT individuals and their health needs." Below the overview is a paragraph of text: "Research suggests that LGBT individuals face health disparities linked to societal stigma, discrimination, and denial of their civil and human rights. Discrimination against LGBT persons has". To the right of the text is a photograph of two men smiling. Below the photograph is a box with the text: "View HP2020 Data for: ► [Lesbian Gay Bisexual and Transgender Health](#)".



<http://HealthyPeople.gov>

Home → Health Topics → Gay, Lesbian, Bisexual and Transgender Health

Gay, Lesbian, Bisexual and Transgender Health



On this page

Basics

- [Summary](#)
- [Start Here](#)
- [Latest News](#)

Learn More

- [Related Issues](#)

Multimedia & Tools

- [No links available](#)

Research

- [Clinical Trials](#)
- [Research](#)
- [Journal Articles](#)

Reference Shelf

- [Organizations](#)
- [Statistics](#)

For You

- [Children](#)
- [Teenagers](#)
- [Men](#)
- [Women](#)
- [Patient Handouts](#)



Get Gay, Lesbian, Bisexual and Transgender Health updates by email 

Summary

Lesbian, Gay, Bisexual, and Transgender Health



People who are lesbian, gay, bisexual, or transgender (LGBT) are members of every community. They are diverse, come from all walks of life, and include people of all races and ethnicities, all ages, all socioeconomic statuses, and from all parts of the country. The perspectives and needs of LGBT people should be routinely considered in public health efforts to improve the overall health of every person and eliminate health disparities. [Read more »](#)

National Health Statistics Reports

Number 77 ■ July 15, 2014

Sexual Orientation and Health Among U.S. Adults: National Health Interview Survey, 2013

by Brian W. Ward, Ph.D.; James M. Dahlhamer, Ph.D.; Adena M. Galinsky, Ph.D.; and Sarah S. Joestl, Dr.P.H.,
Division of Health Interview Statistics

New Survey Report
 Sexual Orientation and Health Among US Adults



Gay and Bisexual Men



LGBT Youth



Lesbian and Bisexual Women



News

Survey Report 📄 - Sexual Orientation and Health Among U.S. Adults: National Health Interview Survey, 2013

Start Talking. Stop HIV - A campaign to reduce the new HIV infections among gay, bisexual and other men who have sex with men

<http://www.cdc.gov/lgbthealth/>



Southeastern/Atlantic Region

HIV/AIDS



Language: English

Pre-Exposure Prophylaxis (PrEP)

A daily pill to reduce risk of HIV infection.

Ask your doctor if PrEP is right for you.



Get Tested

Find an HIV testing site near you.

Enter ZIP code or City

Go



Help

Share

<http://www.cdc.gov/hiv/>

Know Your Risk



HIV/AIDS Awareness Days



Act Against AIDS Campaign



What's New?

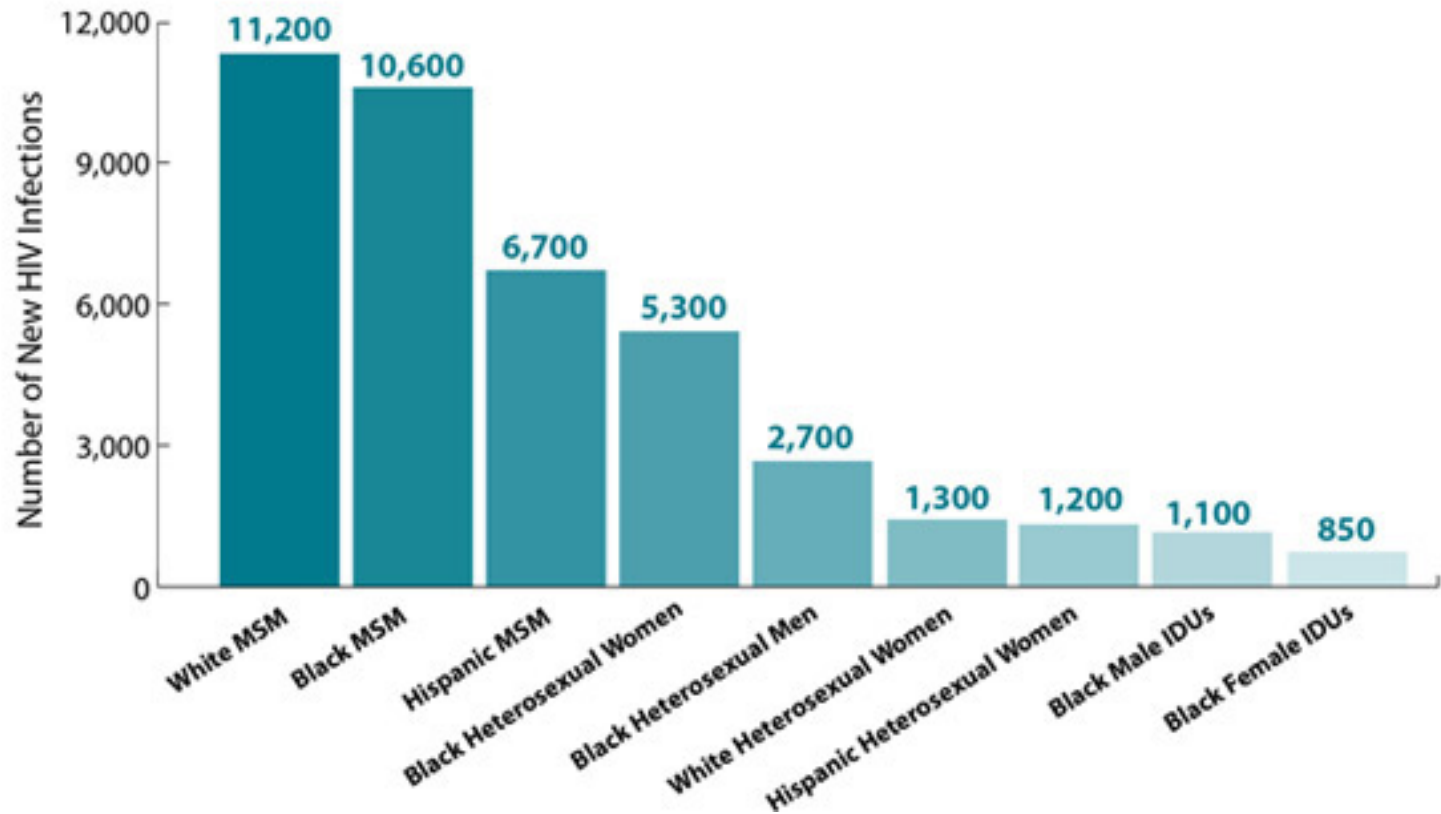
- [New Business Responds to AIDS \(BRTA\) Website](#) – Added May 24, 2016
- [Diagnosed HIV Infection among Adults and Adolescents in Metropolitan Statistical Areas United States and Puerto Rico, 2014](#)  – Added May 24, 2016

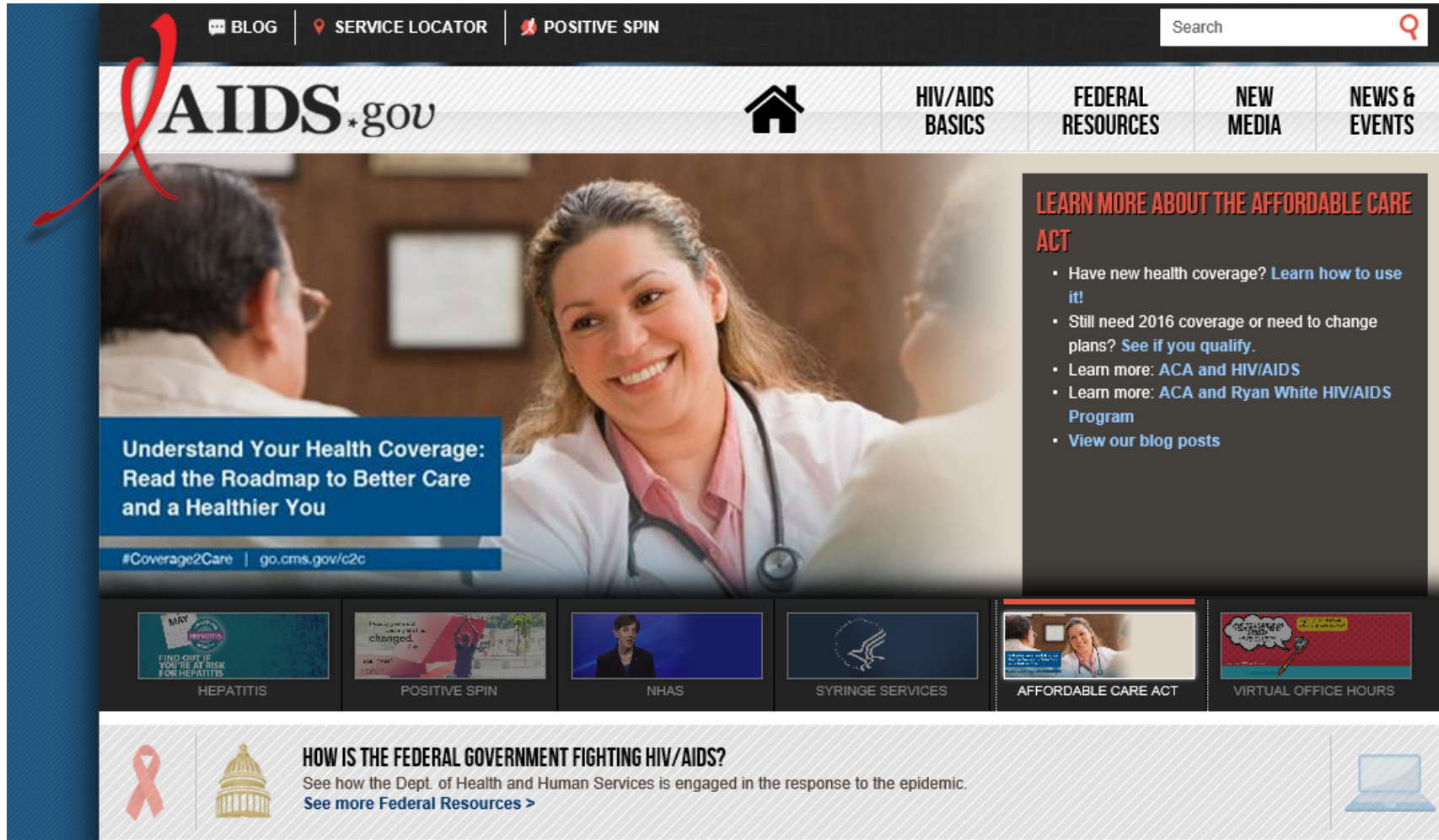
More



Southeastern/Atlantic Region

Figure 1: Estimated New HIV Infections in the United States, 2010, for the Most Affected Subpopulations





The screenshot shows the AIDS.gov website homepage. At the top, there are navigation links for 'BLOG', 'SERVICE LOCATOR', and 'POSITIVE SPIN', along with a search bar. The main header features the 'AIDS.gov' logo, a home icon, and menu items for 'HIV/AIDS BASICS', 'FEDERAL RESOURCES', 'NEW MEDIA', and 'NEWS & EVENTS'. A large banner image of a smiling doctor is the central focus. A blue box on the left of the banner reads: 'Understand Your Health Coverage: Read the Roadmap to Better Care and a Healthier You' with the URL 'go.cms.gov/c2c'. A dark grey box on the right of the banner is titled 'LEARN MORE ABOUT THE AFFORDABLE CARE ACT' and contains a bulleted list of links. Below the banner is a row of six small promotional tiles for 'HEPATITIS', 'POSITIVE SPIN', 'NHAS', 'SYRINGE SERVICES', 'AFFORDABLE CARE ACT', and 'VIRTUAL OFFICE HOURS'. At the bottom, a section titled 'HOW IS THE FEDERAL GOVERNMENT FIGHTING HIV/AIDS?' includes a red ribbon icon, a Capitol building icon, and a link to 'See more Federal Resources >'. A laptop icon is visible in the bottom right corner of this section.



Southeastern/Atlantic Region

AIDSinfo
Offering Information on HIV/AIDS Treatment, Prevention, and Research

1-800-448-0440 | Contact Us | En Español

Search AIDSinfo Search

Home Guidelines Clinical Trials Drugs HIV/AIDS Health Topics Education Materials Mobile Resources & Tools

DID YOU KNOW?

We have information about recommended immunizations for people infected with HIV

[Take me there!](#)

News

May 27, 2015
Starting Antiretroviral Treatment Early Improves Outcomes for HIV-Infected Individuals

May 22, 2015
AIDSinfo At-a-Glance Issue 12

May 19, 2015
HIV Reservoirs Remain Obstacles to Cure

[Search News](#)

Guidelines

Federally approved HIV/AIDS medical practice guidelines

- View and Download the Guidelines
- Adult ARV Guidelines
- Pediatric ARV Guidelines
- Perinatal Guidelines
- Adult OI Guidelines
- Pediatric OI Guidelines

Clinical Trials

Search tool to find HIV/AIDS-related clinical trials

Enter Search Term(s) Search

- HIV/AIDS-Related Clinical Trials
- HIV Preventive Vaccine Clinical Trials
- HIV Therapeutic Vaccine Clinical Trials

Drugs

Information on HIV/AIDS-related drugs

- HIV/AIDS-Related Drugs
- FDA-Approved HIV/AIDS Drugs
- Investigational HIV/AIDS Drugs



AIDSinfo / infoSIDA: <http://aidsinfo.nih.gov>



Southeastern/Atlantic Region



LGBTData.com

- Home
- Data
- Knowledge
- Measures
- Sampling
- Recommend
- more...

The website was created for individuals and organizations:

- 1) Who want to find information about lesbians, gays and bisexuals grounded in scientific knowledge,*
- 2) Who want to find datasets to analyze that include sexual orientation data, and*
- 3) Who want to learn how to collect sexual orientation data.*

For further information about this website please contact:

Welcome to www.LGBTData.com!

This site was created by **Dr. Randall Sell**.

LGBTData.com serves as a no-cost, open-access clearinghouse for the collection of sexual orientation & gender identity data and measures.

This site also provides knowledgeable analysis, commentary and expert "how to" information on gathering such data effectively in scientific surveys, questionnaires and studies. Collected and categorized here you will find numerous datasets and links to rich data sources that are essential to LGBT health research, researchers, students, advocates and anyone interested in scientific-based information about LGBT people and populations.

This website encourages the collection of sexual orientation data and the analysis of data sources that have already collected such data. In order to facilitate this process, this website covers the following topics:

Data Sources - What information systems and databases have collected sexual orientation data?

Knowledge - What have we learned about LGBTs from these data sources?

<http://www.lgbtdata.com/index.html>



Other Resources

Professional, Organizations, etc.



Specific Populations

- Child Welfare Information Gateway: Gay and Lesbian Adoptive Parents
 - <https://www.childwelfare.gov/topics/adoption/adoptive/family-type/glb-families/>
- Gay, Lesbian, & Straight Education Network (GLSEN)
 - <http://www.glsen.org/>
- SAGE: Services & Advocacy for LGBT Elders
 - <http://www.sageusa.org>
- LGBT Aging Project
 - <http://www.lgbtagingproject.org/>
- Lesbian, Gay, Bisexual, and Transgender Health Sciences Librarians MLA Special Interest Group
 - <http://www.mlanet.org/p/cm/ld/fid=213>



More...

- BiNet USA
 - <http://www.binetusa.org/>
- Accord Alliance
 - <http://www.accordalliance.org/>
- The Mautner Project
 - <http://www.mautnerproject.org/>
- American Academy of Pediatrics
 - <https://www.healthychildren.org/English/ages-stages/teen/dating-sex/Pages/Four-Stages-of-Coming-Out.aspx>

Professional/Organizations

American Institute of Bisexuality

- <http://www.bisexual.org/>

Intersex Society of North America

- <http://www.isna.org/>

National Coalition for LGBT Health

- <http://lgbthealth.webolutionary.com>

World Professional Association for Transgender Health

- <http://www.wpath.org/>





Southeastern/Atlantic Region



[Find a Provider](#) | [Join/Renew](#) | [Donate](#) | [Contact Us](#)

[Home](#) [About GLMA](#) [Membership](#) [Resources](#) [Advocacy](#) [Lesbian Health Fund](#) [Conference](#) [Newsroom](#) [Support GLMA](#)

[My GLMA Home](#) 
 [Find a Provider](#) 

- [About GLMA](#)
- [Membership](#)
- [Resources](#)
- [For Patients](#)
 - [Find a Provider](#)
 - [Top 10 Health Issues](#)
 - [Trans Health Resources](#)
- [For Providers](#)
- [For Students & Trainees](#)
- [Continuing Education](#)
- [Publications](#)
- [Academic Health](#)
- [Advocacy](#)
- [Lesbian Health Fund](#)
- [Conference](#)
- [Newsroom](#)
- [Support GLMA](#)



GLMA For Patients

[Patients](#) [Providers & Researchers](#) [Students](#) [Online CME](#) [Publications](#)
[Find A Provider](#) [Top 10 Health Issues](#) [Trans Health Resources](#)

<http://www.glma.org/index.cfm?fuseaction=Page.viewPage&pageId=938&parentID=534&nodeID=1>

Site Search

Go



GLMA is working to bring about equality in healthcare for LGBT people. When LGBT people go to see a doctor or other healthcare provider, the care we receive should be as good as anyone else would receive and LGBT healthcare professionals should not be discriminated against in our work. While much of our work is with healthcare professionals, we provide some information and referral services to LGBT patients.

Looking for a healthcare provider you can be honest with? Search our [Provider Directory](#).

Educate yourself by reading:

- [10 Things Gay Men Should Discuss with Their Healthcare Providers](#)
- [10 Things Lesbians Should Discuss with Their Healthcare Providers](#)
- [10 Things Bisexuals Should Discuss with their Healthcare Provider](#)
- [10 Things Transgender Persons Should Discuss with Their Healthcare Providers](#)

Follow this link for additional [TransHealth Resources](#).

Download Lambda Legal's [Tools for Protecting Your Health Care Wishes](#)

Click the following links for information about [hepatitis](#) and [depression](#).





Subgroups

American Medical Association (AMA) LGBT Advisory Committee

<http://www.ama-assn.org/ama/pub/about-ama/our-people/member-groups-sections/glb-t-advisory-committee/glb-t-resources.page>

American Academy of Physician Assistants LGBT Caucus

https://www.aapa.org/about_aapa/constituent_organizations/caucuses/?id=114728

American Medical Student Association (AMSA) Gender and Sexuality Committee and Interest Group: Gender & Sexuality

<http://www.amsa.org/advocacy/action-committees/gender-sexuality/>



<http://www.lgbthealthlink.org/>



Southeastern/Atlantic Region



DONATE

enter search terms

search

The Community of LGBT Centers

CenterLink: The Community of LGBT (Lesbian, Gay, Bisexual, Transgender) Centers exists to support the development of strong, sustainable LGBT community centers and to build a unified center movement.

HOME DIRECTORY CAREERS PROGRAMS MEMBERS RESOURCES BOARD ABOUT US CONTACT

Find A Member LGBT Community Center

Search our directory of CenterLink member community centers



Like 810 people like this. Be the first of your friends.

- 1
- 2
- 3
- 4
- 5
- 6

JOIN

GIVE

MEMBERS



See How CenterLink Helps LGBT Community Centers

TOP-RATED 2014

Review This Charity on GreatNonprofits

68 reviews.
Average rating: ★★★★★

Read reviews about CenterLink: The Community of LGBT Centers

Volunteer. Donate. Review.

Centerlink, Inc. (CenterLink: The Community of LGBT Centers) is a



Affordable health insurance is here. Get Covered.
See your personalized out-of-pocket cost estimate and explore plans >

<http://www.lgbtcenters.org/>



Creating a Welcoming Environment





Creating Safe Spaces for LGBT Youth





Recent Changes

Affordable Care Act

- Improving healthcare & fighting disparities

Respecting the Rights of Hospital Patients to Receive Visitors and to Designate Surrogate Decision Makers for Medical Emergencies

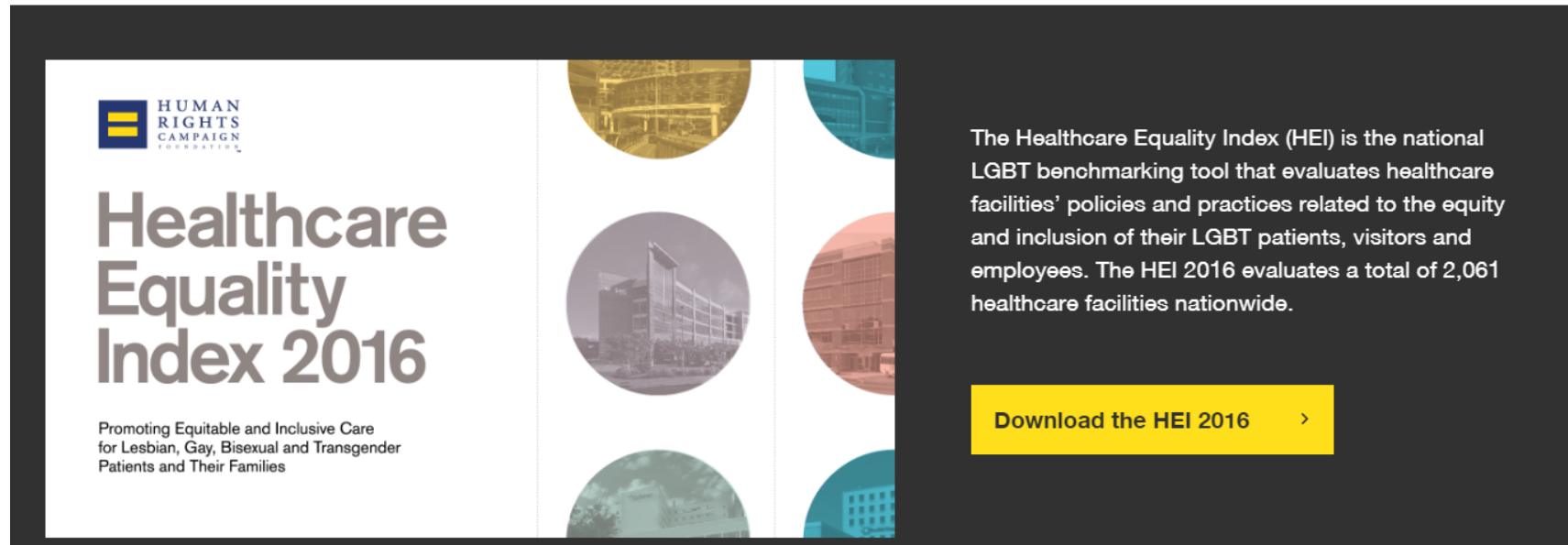
- Presidential Memorandum - Hospital Visitation


Marriage

- Health insurance for partners
- Legal protections

Healthcare Equality Index

Share this



 **HUMAN RIGHTS CAMPAIGN**

Healthcare Equality Index 2016

Promoting Equitable and Inclusive Care for Lesbian, Gay, Bisexual and Transgender Patients and Their Families

The Healthcare Equality Index (HEI) is the national LGBT benchmarking tool that evaluates healthcare facilities' policies and practices related to the equity and inclusion of their LGBT patients, visitors and employees. The HEI 2016 evaluates a total of 2,061 healthcare facilities nationwide.

[Download the HEI 2016](#) >



Southeastern/Atlantic Region

healthcare
BILLOFRIGHTS

healthcare BILLOFRIGHTS
Your personal life and relationships affect your health more than you realize, so your doctor and other providers need to know your story.
We should all feel safe talking about our sexual orientation, gender identity, and sex expression.

healthcare BILLOFRIGHTS
Your personal life and relationships affect your health more than you realize, so your doctor and other providers need to know your story.
We should all feel safe talking about our sexual orientation, gender identity, and sex expression.

READ THE BILL GET THE BILL GET HELP MEET OUR PARTNERS LEARN MORE CONTACT US

f t rss YouTube in



A Time to Share?

LGBT Health Awareness Week

- Typically the last week of March
- <http://www.healthhiv.org/sites-causes/national-coalition-for-lgbt-health/lgbt-health-awareness-week/>

Pride Month

- Typically June



Discussion

What kinds of LGBT resources do you have in your collection?



Southeastern/Atlantic Region

Building a LGBT Collection

- Resources

- Databases
- Journals
- Magazines
- Resources for Books
- Publishers
- Videos

- Funding

- Partnerships
- Grants



Southeastern/Atlantic Region

Databases

LGBT Specific

- LGBT Life with Full Text

Health Sciences

- CINAHL
- Cochrane
- Medline via OVID or PubMed
- EMBASE

Other Subject Databases to Consider

- Anthropology
- Sociology
- Religion

Gender Databases to Consider

- GenderWatch
- Gender Studies Database
- Contemporary Women's Issues
- Studies on Women and Gender Abstracts
- Women's Studies International

Newspaper/Press Databases

- Alternative Press Index (or Archive)
- Newsbank
- Newspaper Source



Southeastern/Atlantic Region

Journals

- Journal of Homosexuality
- Journal of the History of Sexuality
- Sex Roles
- Gender Issues
- Gender and Society
- *International Journal of Sexuality and Gender Studies.*
- *Journal of Gay & Lesbian Psychotherapy*
- *Journal of LGBT Family studies*
- *Journal of Lesbian Studies*
- *Journal of the Gay and Lesbian Medical Association*



Magazines

- POZ
- Advocate
- Out
- Curve: the lesbian magazine
- Lesbian Connection
- LN: Lesbian News
- GayParent
- 10,000 Couples
- Ambiente
- Bi Magazine



JOIN OUR NEWSLETTER

enter your email address

GO

ORGANIZATION	LAMMYS	PRIZES	WRITERS RETREAT	WRITERS IN SCHOOL	RESOURCES	OUR SUPPORTERS
THE REVIEW	REVIEWS	INTERVIEWS	FEATURES	EVENTS	CALL FOR SUBMISSIONS	

RESOURCES

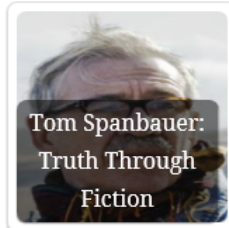
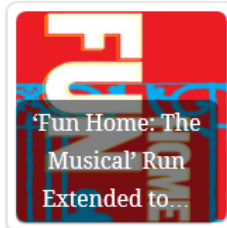
Resources for Books

“People really want to think that these things really happened. I don’t know why that’s important, but I know that when I finish reading a novel or something, I want to know how much of that really happened to this author.”

—*Alison Bechdel*

We know you love to read. It’s why we’re here. If you don’t see what you’re looking for, [email us](#).

Related Posts:



<http://www.lambdaliterary.org/resources>



Promoting the Collection

After you've developed your collection, how would you promote it?



Thanks

Tony Nguyen, MLIS

Access & Communications Coordinator

National Network of Libraries of Medicine, Southeastern/Atlantic Region

601 W Lombard Street | Baltimore, MD 21202

p. 410-706-2066 | e. tnguyen@hshsl.umaryland.edu

- SEA Currents: <http://nnlm.gov/sea/newsletter/>
- Facebook: <https://www.facebook.com/NNLMSEA>
- Twitter: <https://twitter.com/nnlmsea>



This project has been funded in whole or in part with Federal funds from the National Library of Medicine (NLM), National Institutes of Health (NIH), under cooperative agreement No. UG4LM012340 with the University of Maryland, Baltimore. The content is solely the responsibility of the authors and does not necessarily represent the official views of the National Institutes of Health.